



Step-up Transformer Station for BESS

Catalogue 2026 | Substation Portfolio



Introduction	2
--------------	---

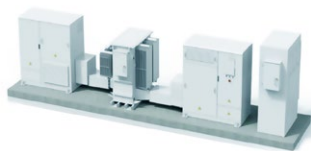
Product	6
---------	---





Function	3
Features	3
Application	3





One of the many possible configurations of a step-up transformer skid station



Brunstock step-up transformer skid stations at an energy storage site (concept)

Function

The step-up transformer skid station converts low-voltage AC power generated by the power conversion system (PCS) into medium-voltage AC power and feeds the power into the power grid.

The step-up transformer skid station integrates a ring main unit, transformer, power converter system and auxiliary power supply into a steel structure (container or skid). This provides a highly integrated power transformation and conversion solution for energy storage plants in medium voltage grid-tied applications.

Features

Intelligent

- Detects the operating status of the ring main unit, transformer and PCS in real time
- Displays power parameters online, with accurate current and voltage detection
- Supports remote access to the running information of the complete step-up station
- Enables remote control of the circuit breaker for the PCS and ring main unit (RMU)

Manufacture

- Internal equipment is selected and installed
- 20-foot container of skid structure facilitates easy transportation and installation

Reliable

- Solid and reliable structure design
- IP54 rating of medium voltage RMU room and PCS

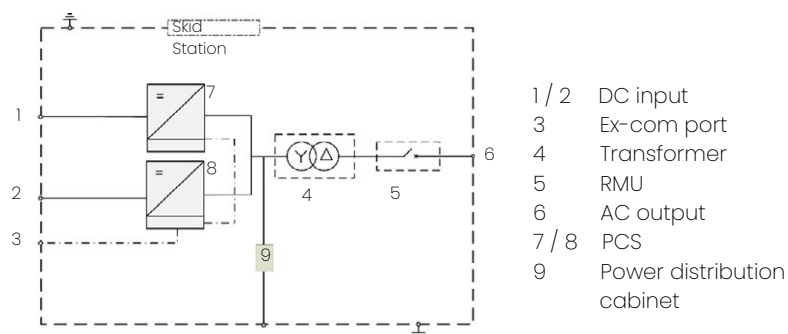
Fast

- Fast deployment can be implemented
- Only the PCS needs to be routed in, and medium voltage cables need to be routed out, on site.

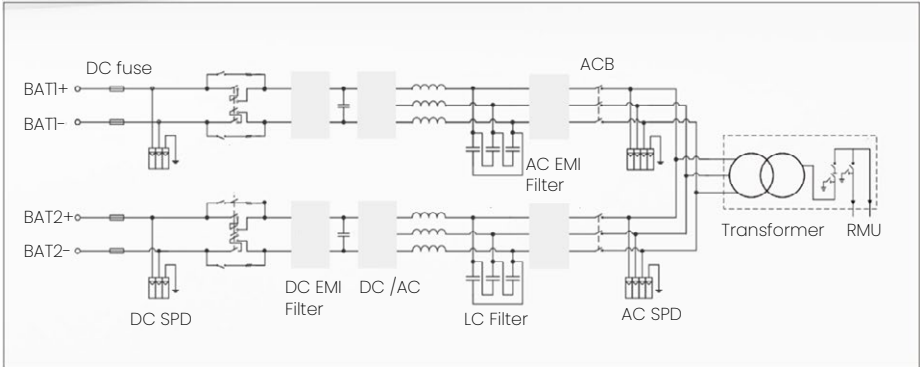
Application

The Brunstock step-up transformer skid station is designed for grid-tied systems in large BESS plants.

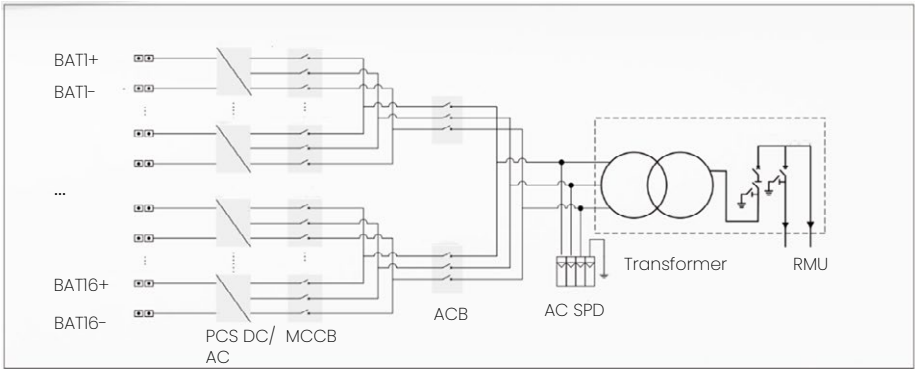
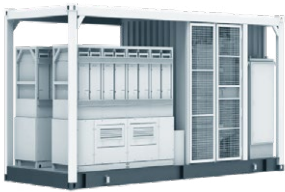
Network application

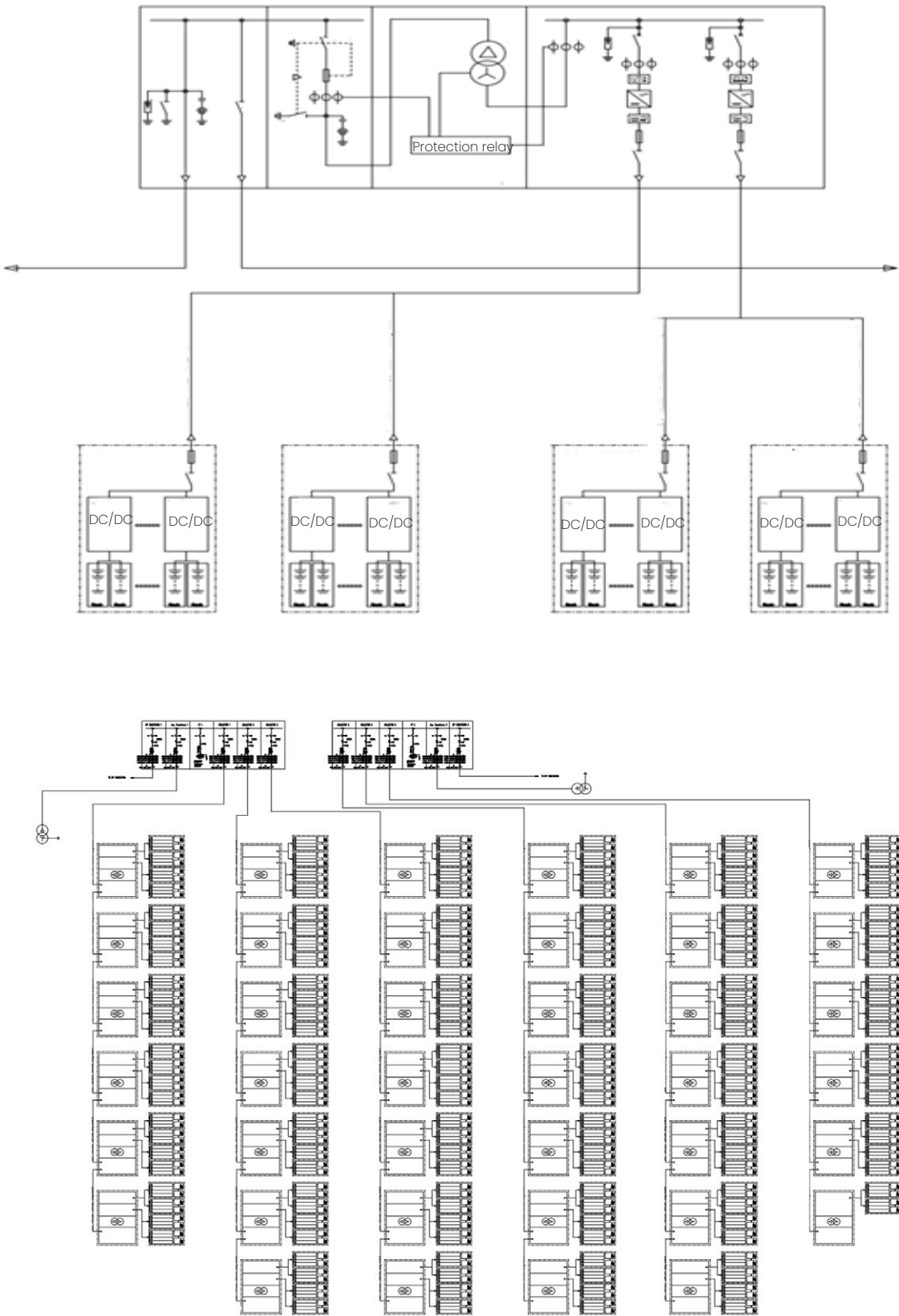


Example for step-up transformer station with central PCS



Example for step-up transformer station with string PCS





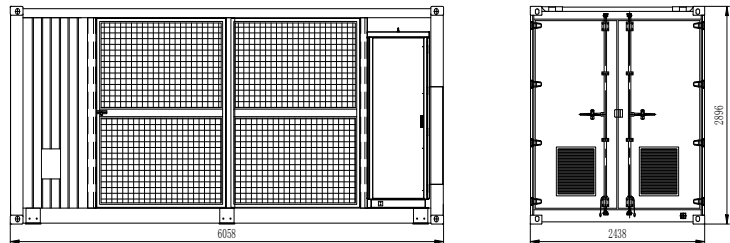
Product description	7
Technical data	8
Product design	9
Thermal design	11
Foundation	12



Appearance

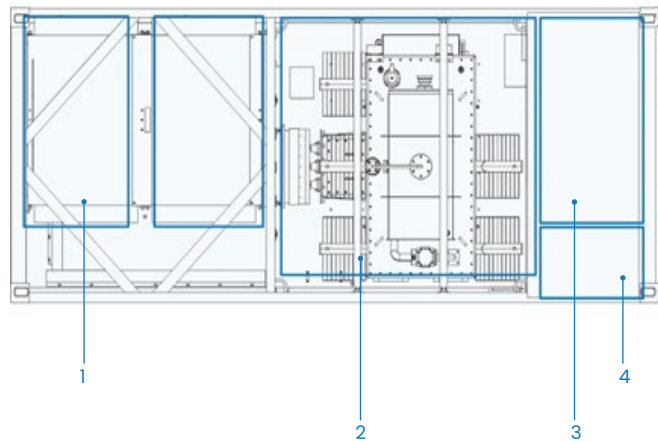


Exterior dimensions



For ease of transportation, the station has the same dimensions as a 20-foot container: W 6,058mm x H 2,896mm x D 2,438mm.

Internal composition



1. PCS
2. Transformer
3. RMU
4. Power distribution cabinet

Type	3,000kVA	5,000kVA
Transformer		
Transformer type	Oil Transformer	
Rated power	3,000 kVA @ 40°C ¹	5,000 kVA @ 40°C ¹
Max. power	3,400 kVA @ 30°C	5,500 kVA @ 30°C
Vector group	Dyll	Dylllyll
LV / MV voltage	0.8 kV / 20 – 35 kV	0.8kV/0.8 kV / 20 – 35 kV ²
Maximum input current at nominal voltage	2,500 A * 1	2,500 A * 2
Frequency	50Hz	
Tapping on HV	0, ±2×2.5%	
Efficiency	≥99%	
Cooling type	ONAN (Oil Natural Air Natural)	ONAN (Oil Natural Air Natural)
Impedance	6.5% (±10%)	6.5% (±10%)
Oil type	Mineral oil (PCB free)	
Winding material	Al / Al	
Insulation class	A	
MV switchgear		
Insulation type	Gas (SF6-free ²)	
Rate voltage	24–36 kV ²	
Rate current	630 A	
Internal arcing fault	IAC AFLR 31.5 kA / 1s	
Qty. of feeder	2–3 feeders	
MV surge arrester for VCB	Optional ³	
PCS		
DC side	800V-1500V, 1935A*2	1300V-1500V, 2154A*2, 2 inpus
AC side	3000kVA / 690V	5000kVA / 900V
Protection		
AC input protection	Circuit breaker	
Transformer protection	Oil-temperature, oil-level, oil-pressure	
Relay protection	50/51, 50N/51N	
LV overvoltage protection	AC Type II (optional: AC Type I + II)	
Anti-rodent Protection	C5-Medium	
General data		
Dimensions(W*H*D)	6,058mm x 2,896mm x 2,438mm	
Approximate weight	≤ 5 T	≤ 22 T
Operating temperature range	-25°C ~ 60°C ⁴	
Auxiliary power supply	100 KVA / 400V	
2kVA UPS	Optional ³	
Degree of protection	IP54	
Allowable relative humidity range (non-condensing)	0 – 95 %	
Operating altitude	1,000 ⁵ m (standard) / > 1,000 m (optional)	
Communication	RS485, Ethernet, Optical fiber	
Compliance	IEC 60076, IEC 62271-200, IEC 62271-202, IEC 61439-1, EN 50588-1	

1. More detailed AC power, please refer to the de-rating curve.

2. Rated output voltage from 20 kV to 36 kV, more available upon request (SF6 is used in BGS-24, our 24kV GIS)

3. Extra expense needed for optional features which standard product doesn't contain, more options upon request.

4. When ambient temperature ≥55°C, extension roof shall be equipped for station on site by customer.

5. For higher operating altitude, please consult with Brunstock.



A step-up transformer station consists of three parts: PCS, transformer room, and medium voltage room. This is mounted on a metal pad (a skid) or inside an enclosure that is the same size as a standard shipping container.

PCS

The PCS cabinet, located in the container or on the skid (metal pad), is used to converge the DC power to AC power and feed it into the MV grid. It can be a central or string type of PCS, according to customer specifications. The size of the required PCS helps Brunstock determine the overall layout of the container or skid station.



Medium voltage room

The medium voltage room contains a Brunstock gas-insulated secondary ring main unit and a circuit breaker. This transformer protection is mainly achieved through the relay protection device. When the transformer is overloaded or short-circuited, the circuit breaker can be reliably disconnected. When the transformer experiences an over-temperature fault, heavy gas fault, or oil over pressure fault, the circuit breaker trips and the system is quickly protected.

The medium voltage room also contains a communication box and a power distribution cabinet.

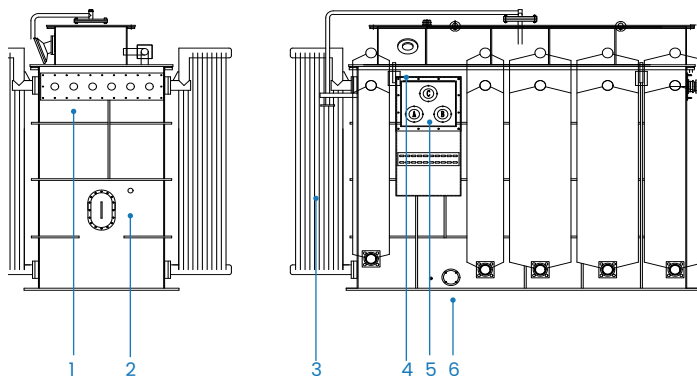


Medium-voltage switchgear		
Type		RMU
Rated voltage	kV	BGS-40.5
Rated frequency	Hz	50
1 min power frequency withstand voltage (RMS) phase to phase, to earth/across isolating distance	kV	95/118
Lightning impulse withstand voltage (RMS) phase to phase, to earth/across isolating distance	kV	185/215
Rated busbar current	A	630/1,250
Rated short-circuit breaking current	kA	31.5
Rated short-time withstand current/ duration	kA/s	31.5/4
Protection degree of gas-filled compartment	IP	67
Protection degree of switchgear	IP	4X
Panel dimension without LV box (W x D x H)	mm	600 x 1300 x 1700
Functional panel weight	kg	650-700
Extension		Top (Lateral optional)
Internal arc classification	kA/s	AFLR 31.5/1



Transformer room

The transformer room includes a transformer that is used to convert the low voltage AC power into medium voltage AC power. This transformer integrates accessories such as a pressure relief valve, tap changer, oil level indicator, pressure gauge, oil temperature indicator, oil filling valve and oil drain valve.



1. LV bushing
2. Tap changer
3. Heat sink
4. Oil level meter
5. HV bushing
6. Oil drain valve

The structure of 4,600kVA is shown in the figure as an example. The oil-cooled transformer uses natural heat dissipation, and the top is not covered.

Step-up transformer			
Items			4,600/33, 3 windings, oil immersed
Rated output		kVA	4,600
Vector group			Dy11y11
Type of cooling			ONAN
Rated voltage	HV	kV	33
	LV	kV	0.8
	Voltage variation		±10%
Rated current	HV	A	154
	LV1	A	3,248
	LV2	A	3,248
Number of phases			3
Rated frequency		Hz	50
Frequency variation		%	±5
Conductor materials	HV		Aluminum
	LV		Aluminum
Tap changer	LV		Off circuit
	HV		±2x2.5%
Insulation level	HV	kV	LI 170/AC 70
	LV	kV	AC 5

Note: For more transformer ratings please consult with your Brunstock representative.

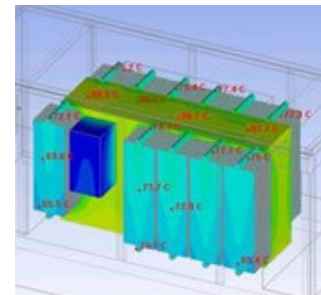
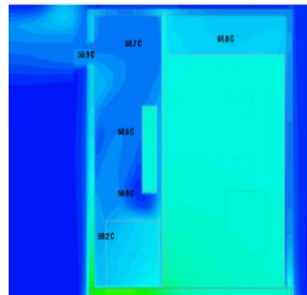
Thermal design

Because there are different working conditions and requirements for each compartment and component, Brunstock's step-up stations utilise different cooling methods for them:

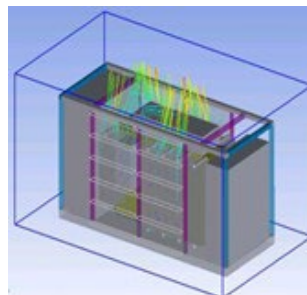
- The ingress protection level of the PCS cabinet is high, so it uses forced cooling to take away the indoor heat of the PCS cabinet
- The MV transformer uses ONAN (oil natural air natural) cooling
- The MV switchgear as well as the communication and power distribution cabinet are naturally cooled via vents, air intake from the bottom and air extraction by the fan above.

Our science-based cooling structure design ensures cooling efficiency and effectively extends the service life of internal components and the entire container.

Flow field analysis of step-up station

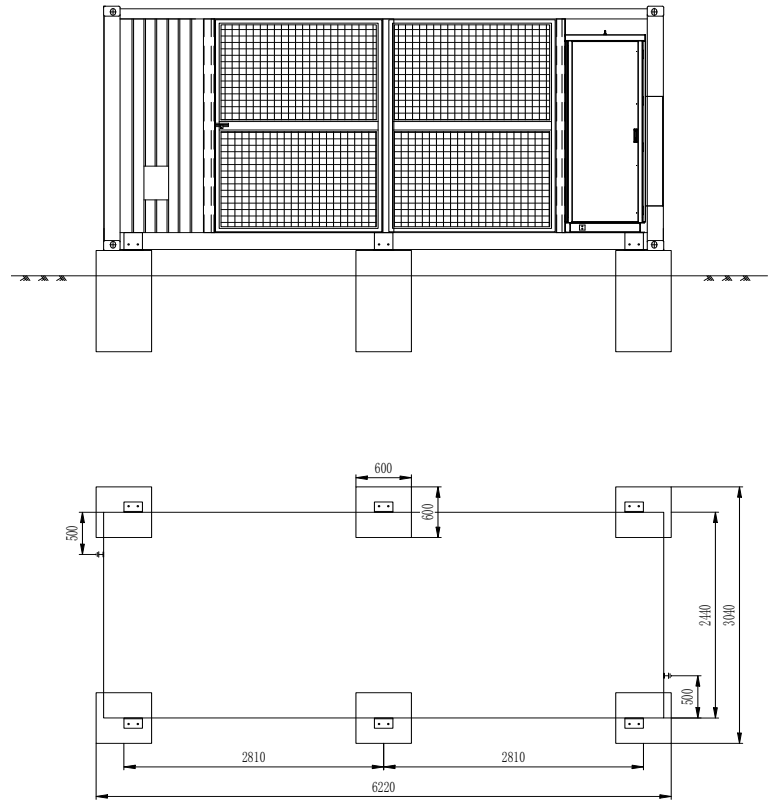


Temperature field analysis of step-up station



Foundation

Construct a foundation of the correct dimensions based on the site design drawing. This figure is for reference only.



For details about our BESS step-up solutions please go to www.brunstock.com/step-up-transformer-skid-stations

Brunstock
sales@brunstock.com
[brunstock.com](https://www.brunstock.com)

©2025 Brunstock. All Rights Reserved. Brunstock are trademarks owned by Brunstock or its affiliated companies.

BRMK 300111